

A Regional Innovation Impact Assessment Framework for European Universities

Koen Jonkers
Joint Research Centre



Disclaimer: This presentation does not necessarily reflect the official opinion of the European Commission. The commission nor anyone acting on its behalf can be held responsible for the use made of material contained in it.

Lamy Report – 'European Universities'



The EU could offer top-up institutional funding tied to modernization and innovation performance (Lamy et al, 2017)

Performance based funding of universities

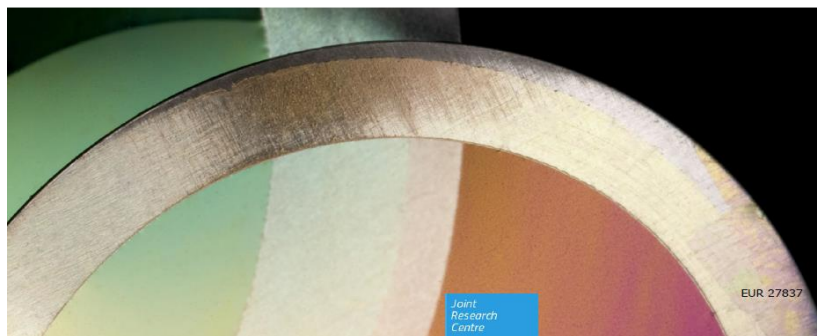


JRC SCIENCE FOR POLICY REPORT

Research Performance Based
Funding Systems: a Comparative
Assessment

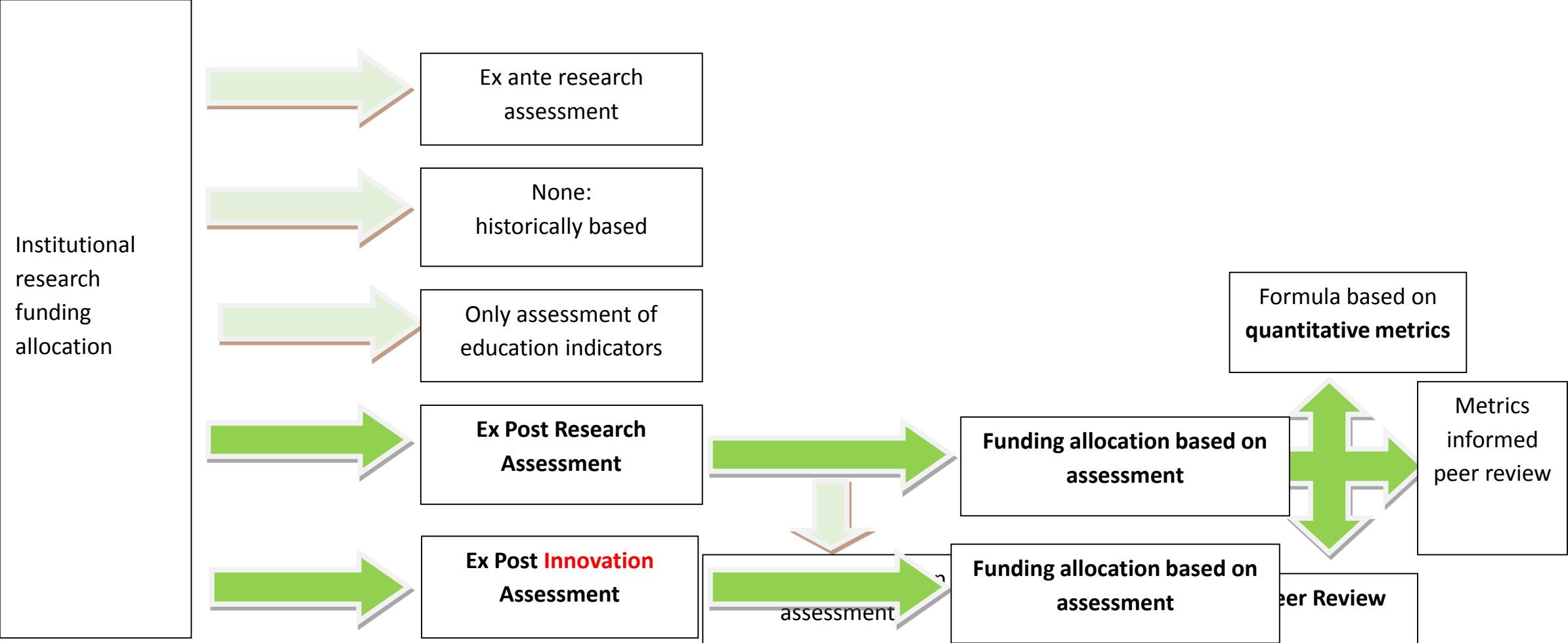
Koen Jonkers & Thomas Zacharewicz

2016

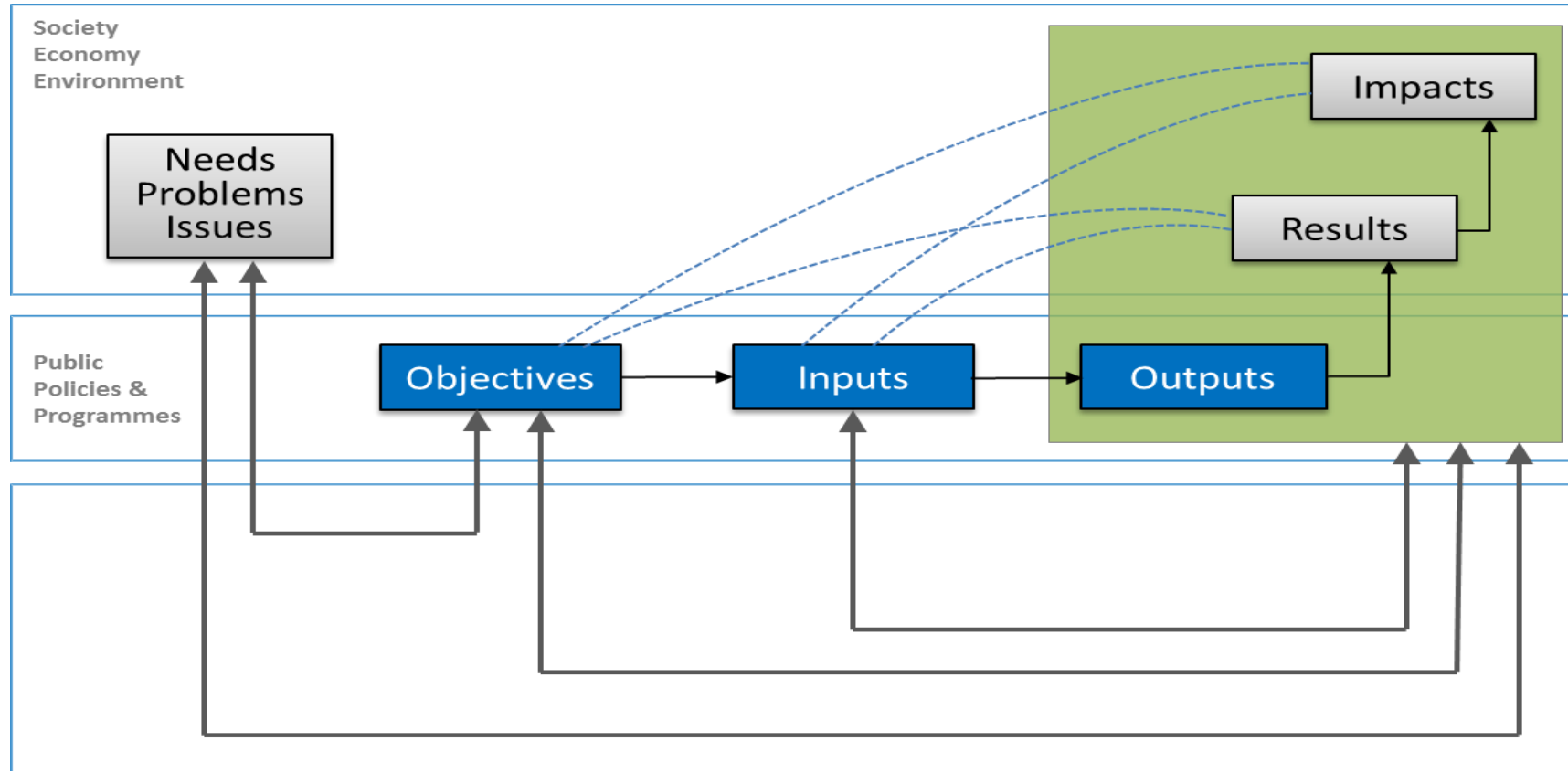


- Based on a comparative qualitative analysis of 35 national R&I systems.
- Fed into the H2020 PSF MLE on PBF

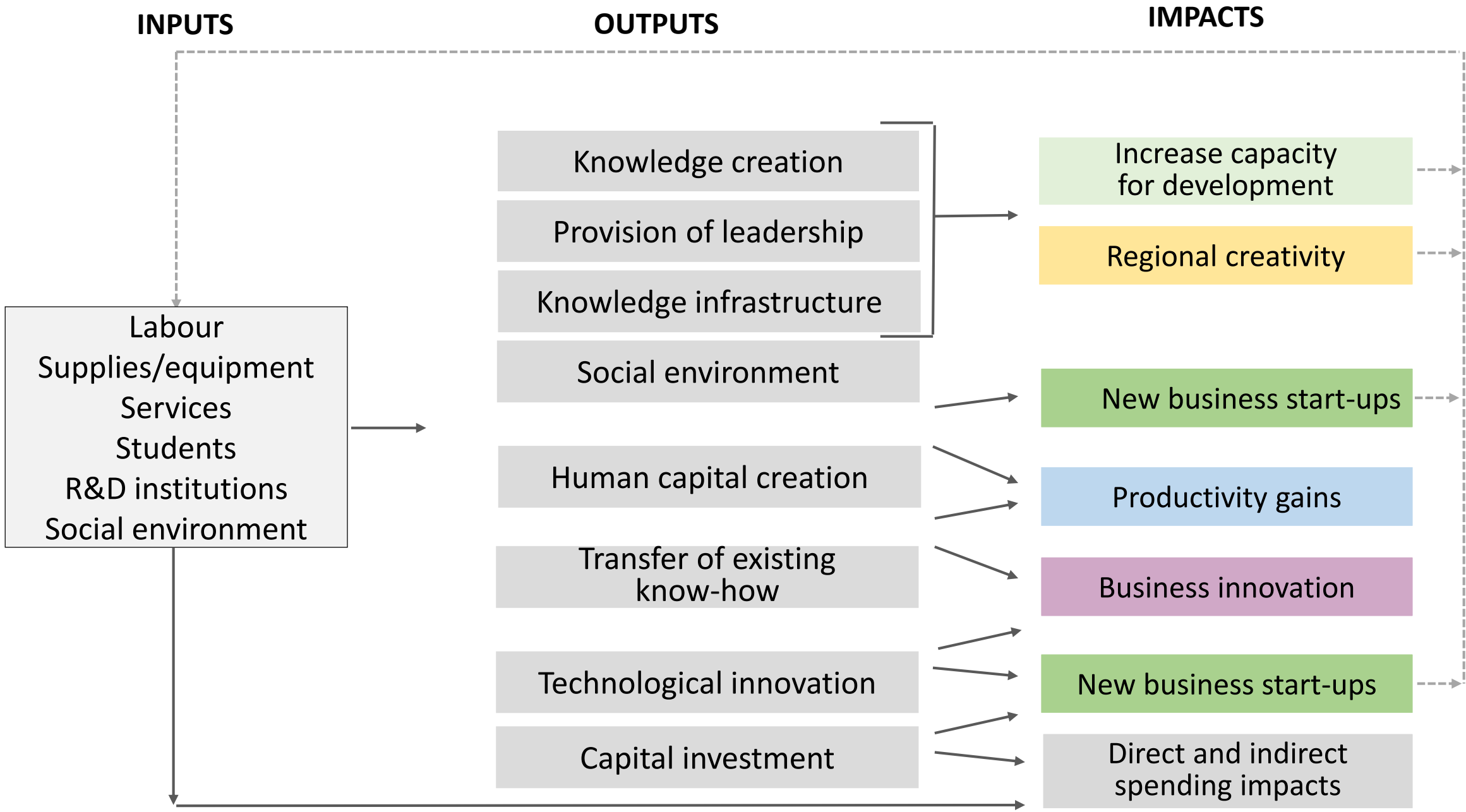
Performance based funding of universities



Innovation Impact of Universities



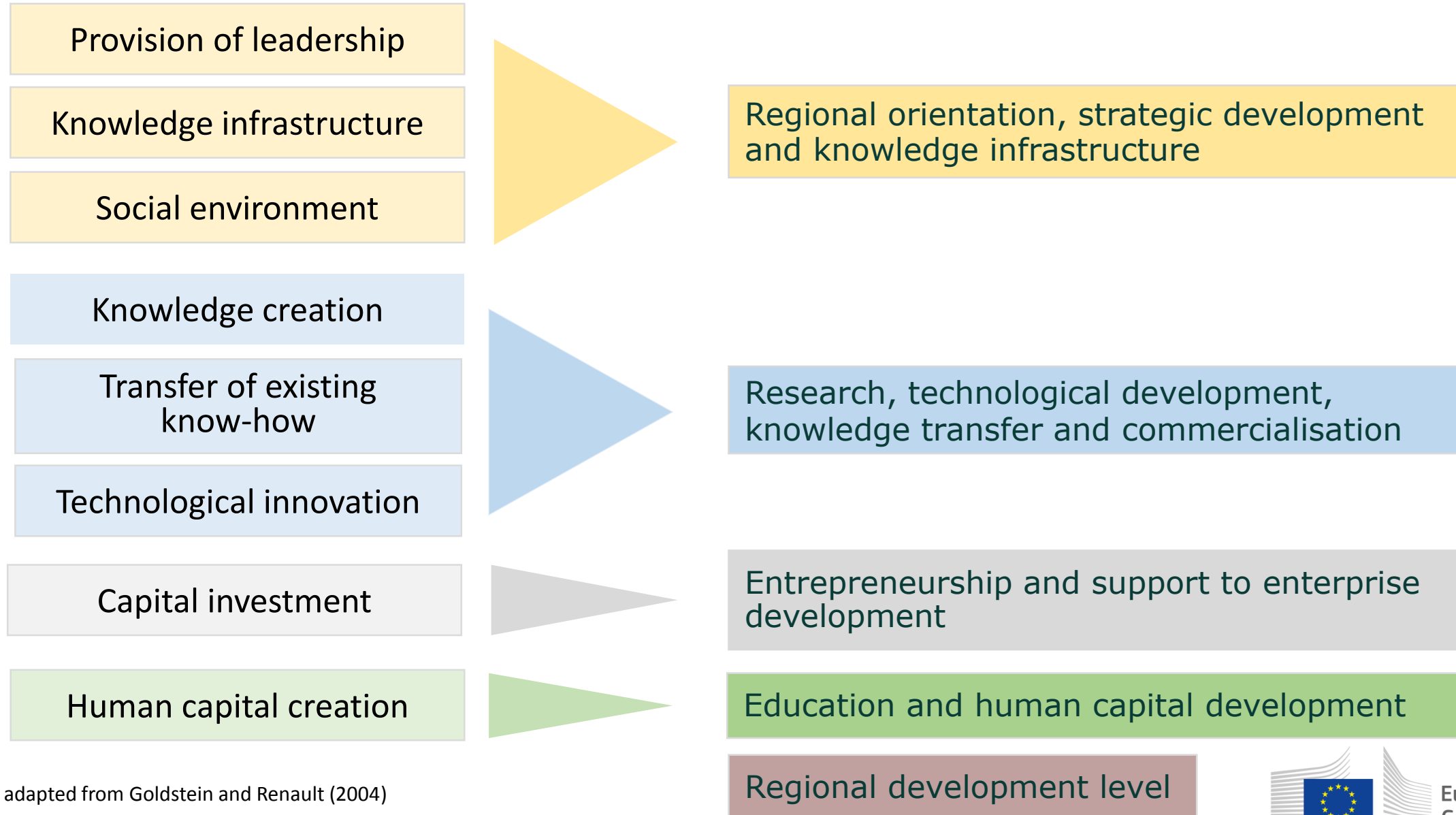
Source: adapted from Technopolis Group (1999)



Source: adapted from Goldstein and Renault (2004)

OUTPUTS/IMPACTS

Indicator portfolio



Source: adapted from Goldstein and Renault (2004)

OUTPUTS/IMPACTS

Indicator portfolio

Provision of leadership

Knowledge infrastructure

Social environment

Regional orientation, strategic development and knowledge infrastructure

Tailor made RIA profile could feed into a university level case study: a "narrative with numbers"

Capital investment

Human capital creation

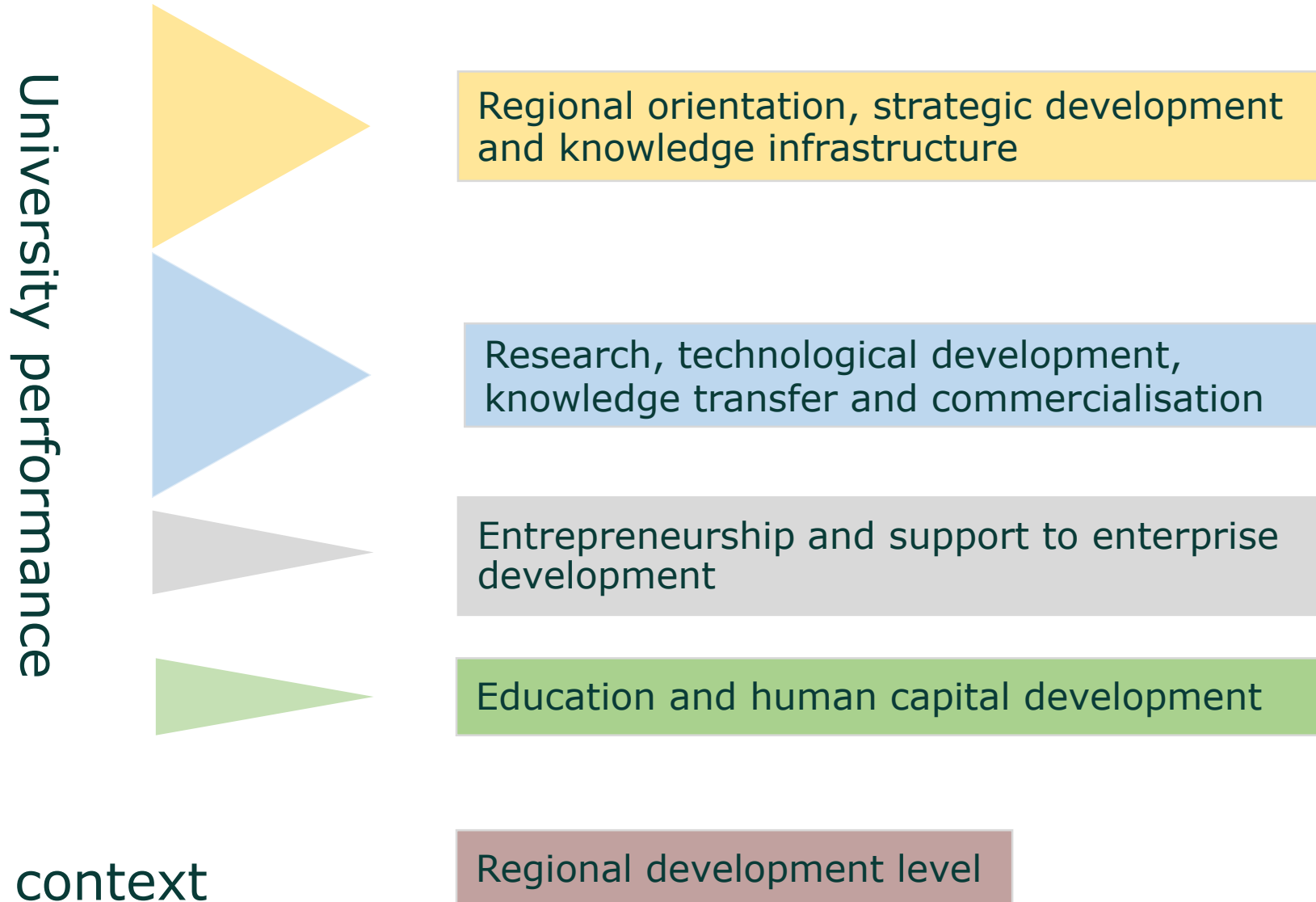
Entrepreneurship and support to enterprise development

Education and human capital development

Regional development level

Source: adapted from Goldstein and Renault (2004)

Indicator boxes



Innovation Impact of Universities

General considerations

- Performance systems may:
 - Assess absolute innovation performance
 - Performance relative to regional performance
 - Improvement of performance (progress)
 - Performance with respect to pre-determined objectives (contracts)
- Final design dependent on the framework through which it is implemented (e.g. national frameworks, FP9 or ESIF)

Innovation Impact of Universities

General considerations

- Involvement of stakeholders
- No one-size-fits-all
- Take into account translation incentives to individual researcher level
- Involve international expert review panels
- No trade-off between research funding and innovation funding
- Get started and refine the system progressively!



Thanks

Questions and inputs/feedback?

You can find me at koen.jonkers@ec.europa.eu